

PART OF N.W. 1/4 OF SECTION 15, T.6N., R.1W., S.L.B. & M.  
**STETTLER SUBDIVISION NO. 2**

**BLOCKS 2 & 7**

TAXING UNIT: 25

IN OGDEN CITY  
 SCALE 1" = 50'

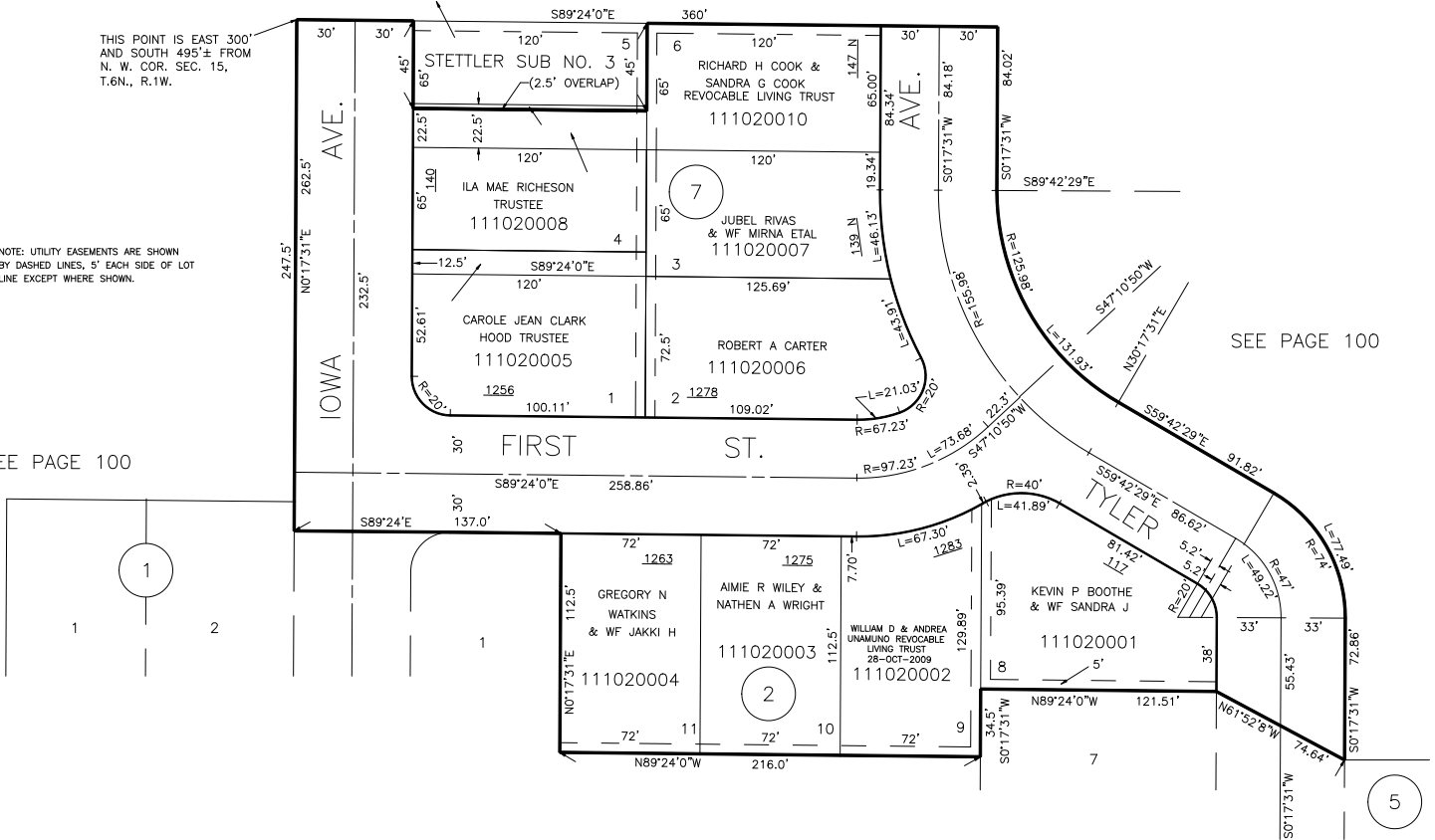
SEE PAGE 104

THIS POINT IS EAST 300'  
 AND SOUTH 495'± FROM  
 N. W. COR. SEC. 15,  
 T.6N., R.1W.

NOTE: UTILITY EASEMENTS ARE SHOWN  
 BY DASHED LINES, 5' EACH SIDE OF LOT  
 LINE EXCEPT WHERE SHOWN.

SEE PAGE 100

SEE PAGE 100



FOR COMPLETE ENG DATA SEE  
 ORIGINAL DEDICATION PLAT IN  
 BOOK 12, PAGE 47 OF RECORDS.